

How to use teacher made ExamView tests in CPS

Open ExamView and design test

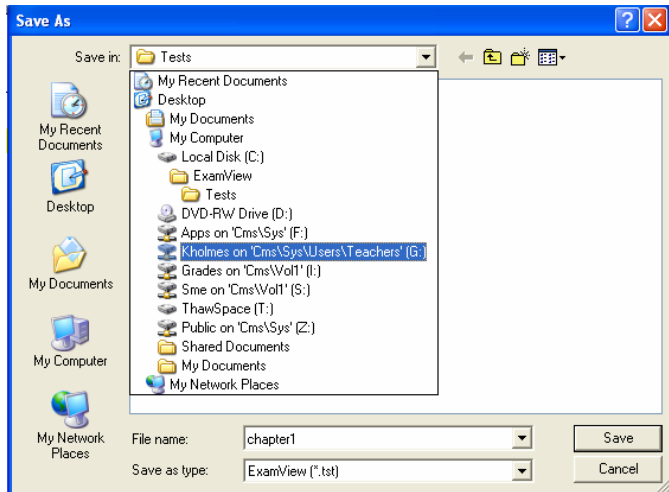
Click File menu

Click Save As...

Type in desired test name

Click the pull-down arrow next to Save in...

Choose your g: drive (ex: tkelley on Mhs\Vol1\Users\Teachers[G:].....)



Click Save

Close ExamView

Open CPS

Go to Lessons tab

Right Click on your ExamView folder **OR** a folder inside your ExamView folder

Click Add File...

Click the pull-down arrow next to Look in...

Choose your g: drive again like above

Click on your saved test

Click Open

It is now ready to engage in CPS !!!!

